



DIGITUBE[®]

PERFECT PRO

Quickstart manual

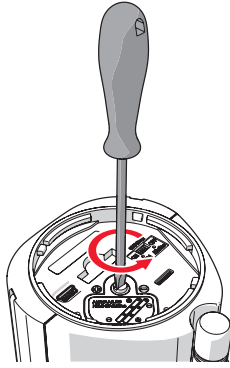
Digitube jobsite radio

1

How to insert the batteries and connect to the mains (230V)

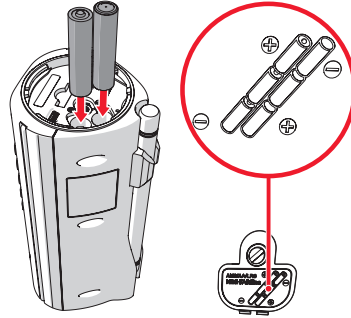


a.

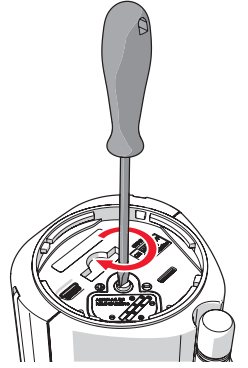


b.

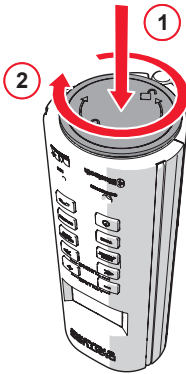
! Mind the + and - polarity when placing the batteries



c.

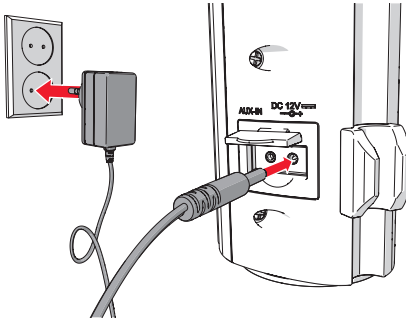


d.



e.

! Fully charge the batteries before first use!

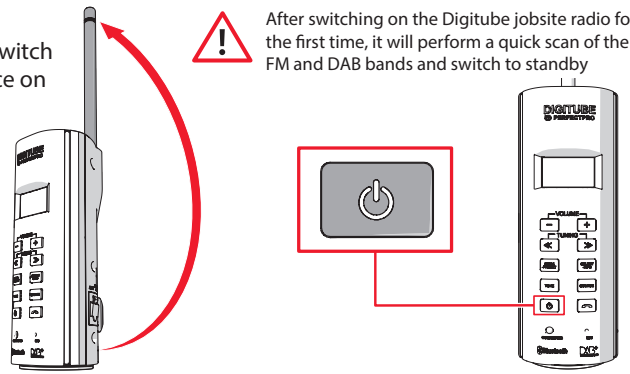


f.

2

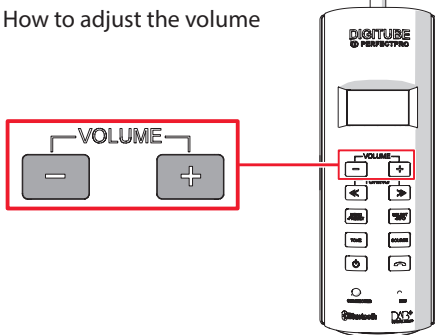
How to switch the device on (or off)

! After switching on the Digitube jobsite radio for the first time, it will perform a quick scan of the FM and DAB bands and switch to standby



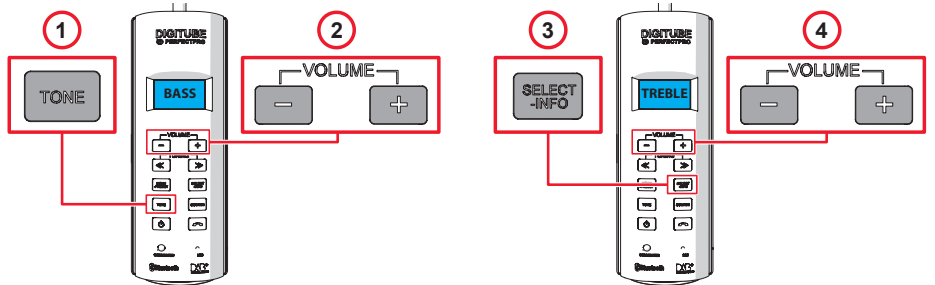
3

How to adjust the volume



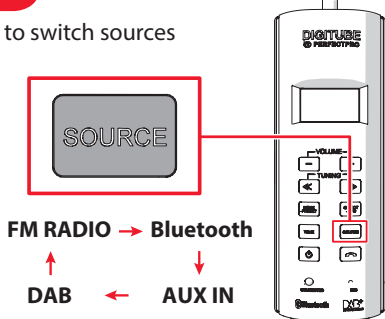
4

How to adjust the Tone (bass or treble)



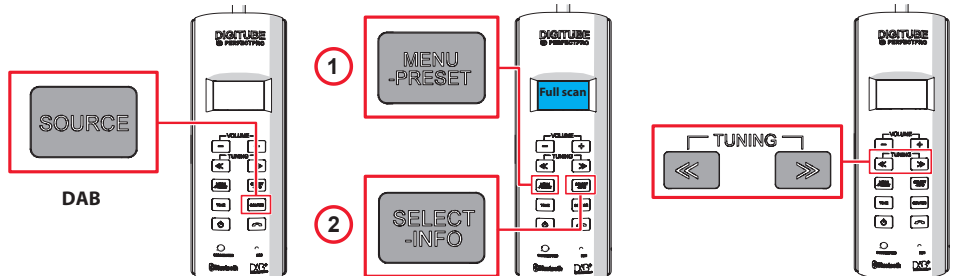
5

How to switch sources



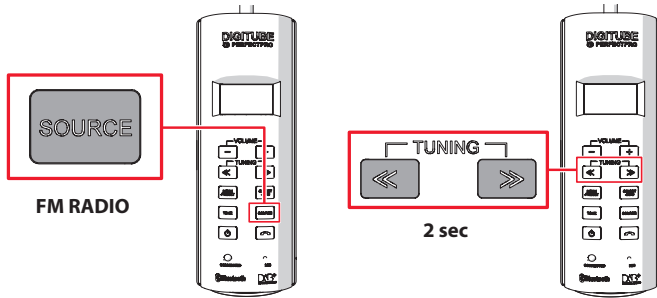
6

How to scan DAB BAND for available stations and select a station



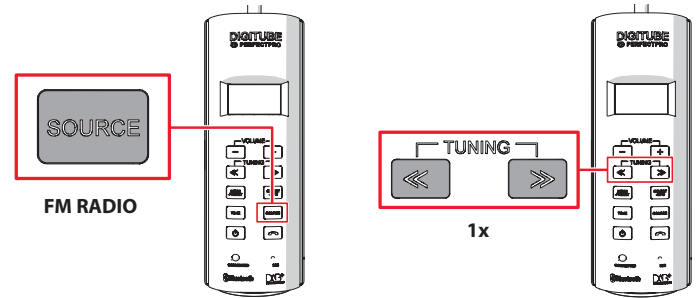
7

How to search for a radio station in FM modus automatically



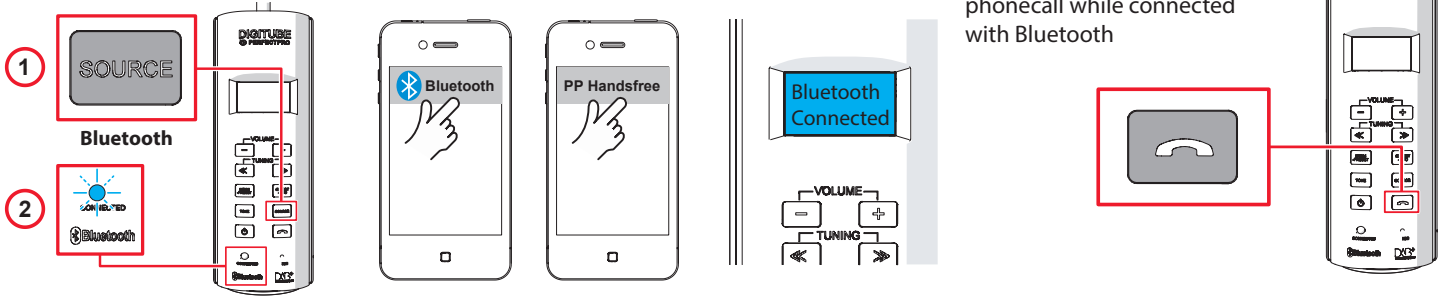
8

How to search for a radio station in FM modus manually



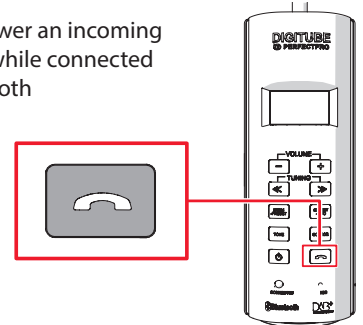
9

How to make a Bluetooth connection



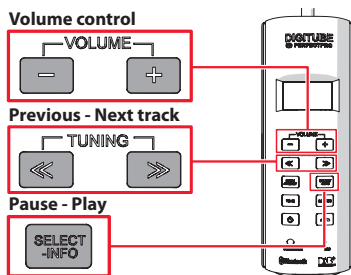
10

How to answer an incoming phonecall while connected with Bluetooth



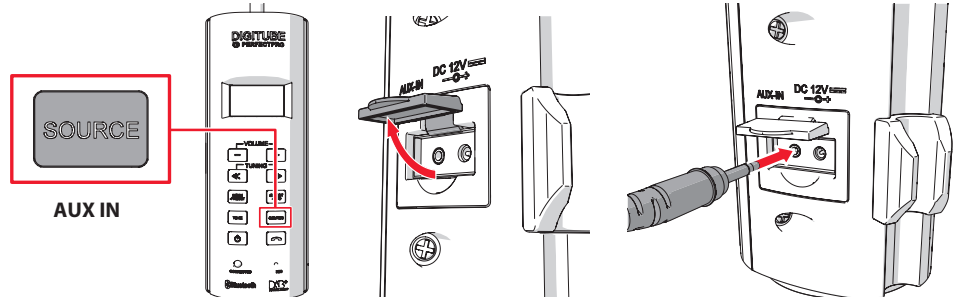
11

How to operate music on your mobile device via the Digitube jobsite radio (Bluetooth modus)



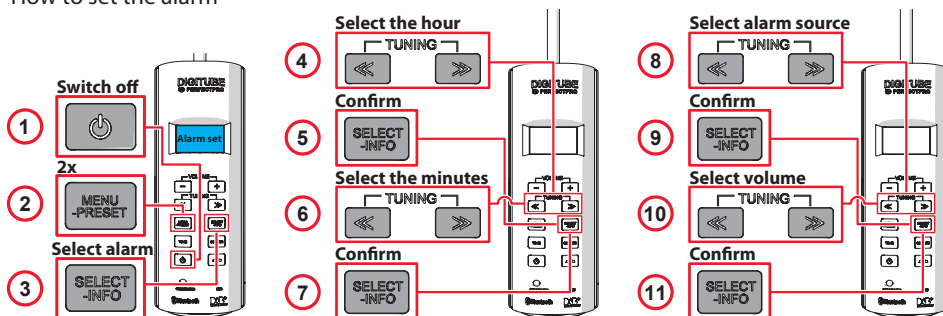
12

How to make an AUX IN connection



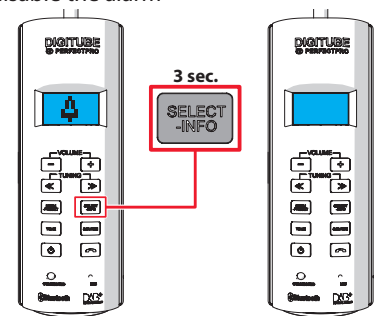
13

How to set the alarm



14

How to disable the alarm



Technical specifications

Power Source: AC/DC 110-240V, 50-60Hz
 Batteries: 6 x 1,5V (type IEC LR6 / AM3 / AA)
 Rechargeable batteries: 6 x 1,2V (type HR06 / AA / 2500mAh NiMH rechargeable battery)

Frequency range:
 FM87,5 – 108,0 MHz
 DAB 174,928 – 239,200 MHz

Speakers: Measurements: 1 x Ø2 1/4 inch
 Output: 1 x 5W
 Aux in connection: Ø 3,5mm
 Bluetooth: Version: 4.0
 Support: A2DP, ACRCP and HFP
 Rain, dirt and dust resistant (IPX4)
 Use Perfectpro approved batteries only

This product is intended for the European market. For more information go to www.perfectpro.eu or read the Instruction manual.

